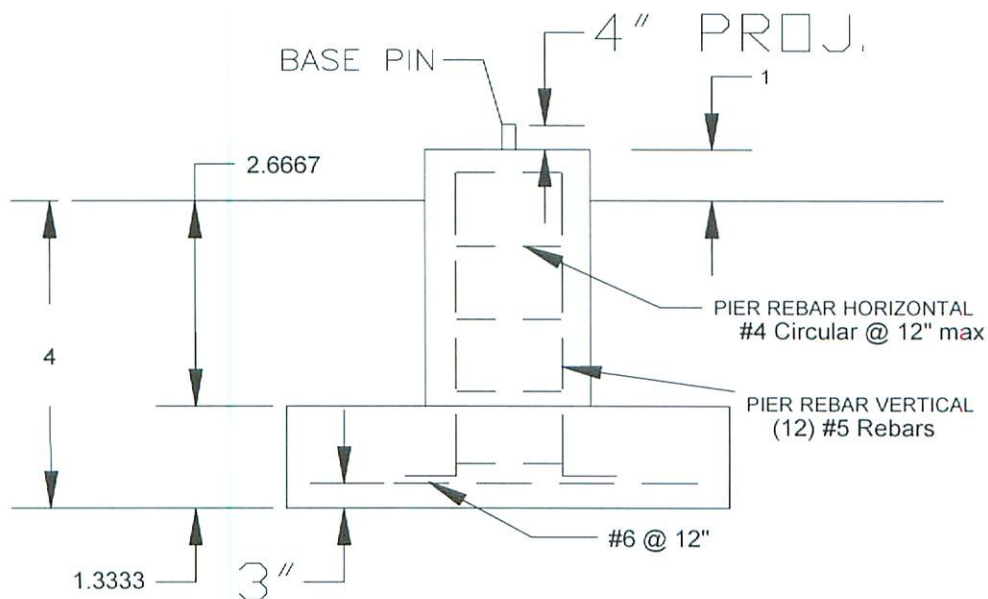


3.09 CU. YDS  
CONCRETE REQ'D



PRELIMINARY NOT FOR CONSTRUCTION

1. CONCRETE TO HAVE 4000 PSI MIN. COMPRESSIVE STRENGTH AFTER 28 DAYS.
2. REINFORCEMENT STEEL IS DEFORMED AND MEETS THE REQUIREMENTS OF ASTM A615 GRADE 60.
3. EMBEDDED STEEL TO HAVE 3" MIN. CONCRETE COVER.
4. FOUNDATION BASED ON NORMAL SOILS

TITLE:

PRELIMINARY FOUNDATION DESIGN  
AMB BASE



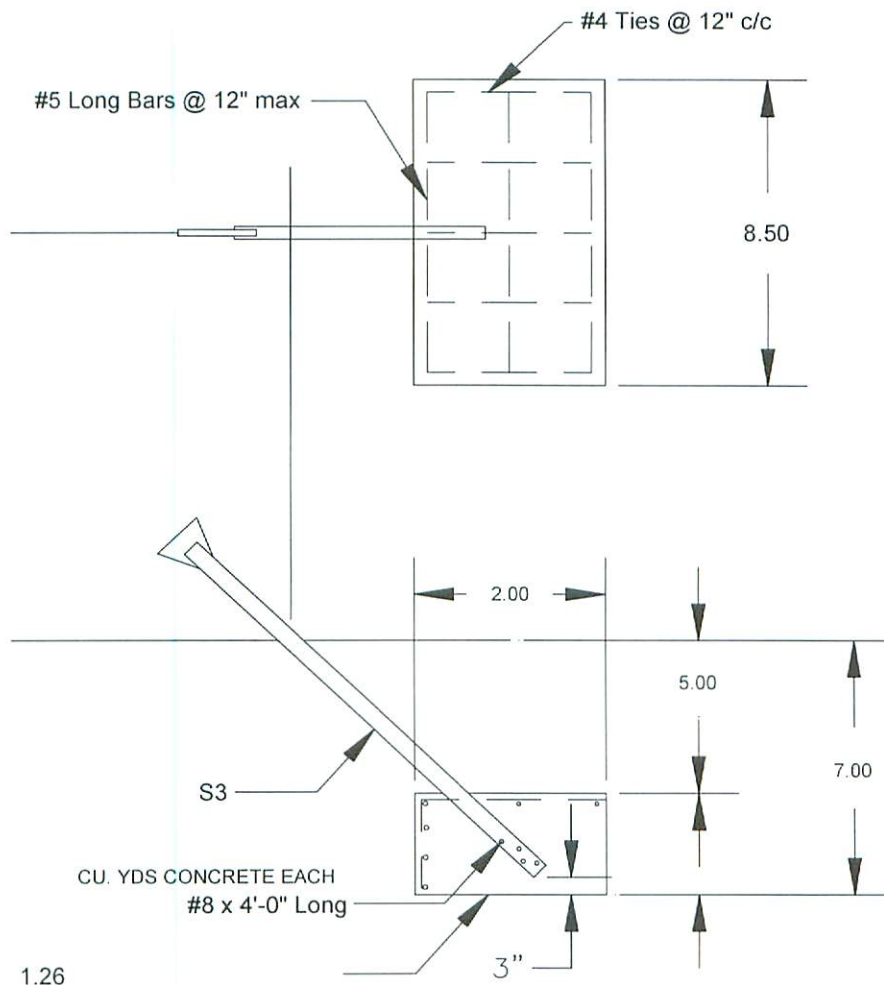
**WORLD TOWER  
COMPANY, INC.**

SCALE

DRN

CKD

DATE



PRELIMINARY NOT FOR CONSTRUCTION

GENERAL NOTES

1. CONCRETE TO HAVE 3000 PSI MIN. COMPRESSIVE STRENGTH AFTER 28 DAYS.
2. REINFORCEMENT STEEL IS DEFORMED AND MEETS THE REQUIREMENTS OF ASTM A615 GRADE 60.
3. EMBEDDED STEEL TO HAVE 3" MIN. CONCRETE COVER.
4. FOUNDATION BASED ON NORMAL SOILS

TITLE: PRELIMINARY FOUNDATION DESIGN

AM ANCHOR



**WORLD TOWER  
COMPANY, INC.**